



STRATEGIC PLAN

2023-2028



ASSOCIATION MONTESSORI INTERNATIONALE



VISION

The Association Montessori Internationale (AMI) understands, articulates and aids the natural development of human beings throughout their lives, enabling them to contribute positively to society, leading to a more harmonious, peaceful and sustainable world through education.

MISSION

We aim to fulfil the right of children and adults around the world to have access to nurturing, developmentally appropriate, educational environments. We do this by delivering relevant and accessible training, targeted advocacy and intentional innovations that increase the impact and reach of Montessori principles and practice.



To achieve our mission, we collaborate and partner with individuals, communities, governments and organisations who share our vision and the commitment to quality, justice and peace for which AMI is widely known and respected.

CAPACITY

Montessori education
accessible to all

1

Increase the range
and accessibility of
AMI Educational Programmes

2

Support quality implementation
for teachers and school
leadership

3

Strengthen the global network
of affiliated societies, training
centres and schools

OUTREACH

Montessori for
social impact

1

Accelerate the work of
Educateurs sans Frontières (EsF)

2

Build influence through
advocacy and public
policy outreach

3

Extend resources for
families and communities

LEGACY

Montessori approach for
the full development
of the human
being

1

Create an unparalleled
knowledge hub, repository
and archive

2

Promote research and
development for education,
peace and sustainability

3

Articulate the Montessori
approach and advance Montessori
principles and practice

OUR CORE VALUES

- Share our knowledge respectfully and peacefully
- Believe that equity, inclusivity and diversity make us stronger
- Engage with others openly and seek to collaborate in pursuit of our mission
- Encourage our community to think global and act local
- Commit to sustainable practices
- Act with integrity, trustworthiness and accountability

OUR COMMITMENT: EQUAL FOR IMPACT

Ethical in our actions
Quality in our offerings
Universal in our application
Accessible and affordable in our reach
Leadership and lifelong learning in our culture

AMI STRATEGIC PLAN 2023-2028

“Our principal concern must be to educate humanity – the human beings of all nations – in order to guide humanity toward seeking common goals. We must turn back and make children our principal concern. The efforts of science must be concentrated on children, because they are the source of and the key to the riddles of humanity.”

Maria Montessori, Education and Peace, p. 27

Education for Peace

We are inspired by Maria Montessori to believe that “if you want peace, prepare the child”. Education and peace fit together like two hands, acknowledging all that is good in the human spirit and embracing love of life, nature and the cosmos. The most powerful expression of peace is to enable the child to experience her full potential and unique place in the world, to realise her freedoms and responsibilities, to reconcile nature with grace and to live in solidarity with all. We support committed non-violent actions against structures, systems, policies and practices that threaten the rights of the child, human rights and the sanctity of the environment. Montessori strives always to promote Peace in the face of violence, Love in times of hatred and Understanding through Education.

Embracing Sustainable

Development

AMI embraces the Sustainable Development Goals. Gender Equality, (SDG5), Reducing Inequalities (SDG10) and Peace and Justice (SDG16) are integral to its work. SDG4, which recognises the rights of all to a Quality Education, relies on many more trained teachers for its fulfilment and is particularly relevant to our work. Our strategy calls us to advance that right, and to increase the number of teachers trained to deliver child-centred Montessori education, while innovating to deliver education to those children and adults who have the least opportunities to access it. We also promote the rights of adults to healthy ageing, (in line with SDG 3) and will magnify the number of knowledgeable adults and

Maria Montessori founded the Association Montessori Internationale in 1929 to carry forward her work for a more just, peaceful, equitable and sustainable planet. We are a global leader in connecting Montessori to the world and make a unique contribution by innovating and implementing Montessori principles and practice in ways that develop the potential of humans to lead fulfilled lives and create a better world. We achieve positive outcomes for individuals, communities and societies by delivering adaptive, quality Montessori education, working collaboratively across the human lifespan with integrity, care and respect.



prepared environments for our elders. Overall, we will carry out our work in Partnerships, consonant with the aspiration of SDG17.

“To the young child we give guides to the world and the possibility to explore it through his own free activity; to the older child we must give, not the world, but the cosmos and a clear vision of how the cosmic energies act in the creation and maintenance of our globe.”

Maria Montessori, India, 1944

PILLARS, GOALS AND STRATEGIC ACTIONS



Three pillars and nine ambitious goals

Execution of the strategic plan will be carried out through our three core pillars — Capacity, Outreach and Legacy.

We will work with members, trainees, graduates, trainers, training centres, affiliated societies, schools and collaborating organisations to reach these goals.

Our activity will reach out beyond the Montessori community to involve, excite and energise all those dedicated to education, global peace, respecting human dignity throughout life and a sustainable environment. The pace and volume of work will be influenced by our ability to secure funding, operate efficiently and achieve sustainable outcomes.



CAPACITY

Montessori education
accessible to all

AMI is committed to building extensive networks of teacher training centres, trainers, teachers, and schools both in the public and private sectors. To achieve this AMI will increase the number of participants on its Teacher Training, Professional Development and Outreach programmes. Training Centres award AMI diplomas and certificates to teachers, classroom assistants, school leaders and administrators working with children from ages 0–18, as well as parents and caregivers. AMI also offers courses that support healthy ageing and adults living with Dementia and is committed to adding to the range and diversity of its courses, and building a global community of exemplary practice.

AMI Affiliated Societies promote AMI's Vision and Mission in their respective countries through educating local communities about Montessori education, supporting training centres, schools and outreach activities in the community, and offering membership of AMI. Affiliated Societies also engage in public policy and advocacy, promoting the vision of child-centred developmental education and the various outreach initiatives of AMI.

Goal 1 Increasing the range and accessibility of AMI education

AMI supports the highest fidelity training to prepare adults to give education as an aid to life in a variety of schools, non-school environments and diverse communities and varying cultural contexts around the world.

- Seek all possible ways to increase the number of AMI Teacher Trainers, and provide them with ongoing professional development and mentorship
- Support the Trainers in Training programme through an online learning platform
- Identify and evaluate training models, infrastructure and new offerings for the long-term sustainability and expansion of courses and training centres globally
- Develop global and regional plans to increase accessibility to courses and strengthen the capacity of training centres to deliver them
- Increase access to ancillary courses on topics such as School Leadership, Montessori for Dementia and Ageing, Sports, Inclusive education and Montessori Awareness Practice
- Develop strategies for courses and supporting services in countries where there is no existing AMI Montessori infrastructure
- Develop digital systems, and multilingual translation capacity to strengthen engagement, resource sharing and collaboration
- Strengthen internal organisational infrastructure to support growth and expansion

Goal 2 Supporting quality implementation for caregivers, teachers and school leadership

AMI aims to develop, broaden and deepen engagement with people across the human lifespan and in varied environments by fostering life-long learning and leadership.

- Provide, through AMI Digital online free resources, an expanded range of accessible, affordable, culturally relevant, high-quality downloadable Montessori materials
- Support the continued development and accessibility of quality and affordable Montessori materials
- Develop online tools and courses to support Montessori quality practice
- Assist teachers through AMI Observation tools, in making systematic observations of their children and ensure developmental as well as academic progress
- Seek all possible ways to increase the number of AMI teachers and formulate a strategy to support their development
- Provide ongoing professional development and mentorship for new and experienced teachers
- Implement a variety of Professional Development Stream Certificates (PDS) for all levels of trained personnel
- Develop and support initiatives and teachers in their work in the public/government school sector

Goal 3 Strengthening the global network of Affiliated Societies, Training Centres and Schools

AMI will strive for increased impact through its Affiliates and other organisations, to enable greater understanding of human development through the Montessori approach and to increase access to Montessori education. It will seek to create a strong, vibrant global community.

- Pilot the Global School Accreditation Programme, managed by AMI Approved Accrediting Authorities in country, to provide assurance of quality across Montessori schools in adopting countries
- Work together with Schools, Affiliated Societies and Training Centres to promote the recruitment, training and professional development of experienced Montessori practitioners to serve as coaches, evaluators, consultants and mentors
- Encourage the general public, teachers and administrators to become AMI members by creating a supportive membership communication and services network
- Strengthen the AMI Affiliate network to enable greater provision of services to the community
- Collaboratively develop regional strategies to support existing and emerging Montessori communities
- Create dynamic spaces and experiences for the community to come together and share knowledge
- Enable regional engagement in advocacy for Montessori within territories and countries



OUTREACH

Montessori
for social impact

The Outreach pillar reflects AMI's commitment to promote and inspire the formation of unique initiatives that serve diverse populations through a Montessori pedagogy that is innovative and designed to meet specific contexts and needs. This pillar also fulfils the commitment to advocate for human rights and sustainable development, in particular children's rights in relation to their education and development. AMI will use its knowledge, experience and professional competence to promote a child-centred approach in all learning environments, in global, regional, national and subnational settings. Educateurs sans Frontières (EsF) is a division of AMI designed to provide equitable access, for all children, to child-centred developmental education and to revisit Montessori principles and practices from the perspective of society at large. AMI is also committed to improving the quality of life of our elders and those living with Dementia by using applied Montessori approaches in their care through the Montessori for Dementia and Ageing initiative (MDA) and to developing other outreach initiatives based on Montessori principles and practice.



Goal 1 Accelerate the work of Educateurs sans Frontières (EsF)

AMI works pro-actively to innovate and build local and global partnerships to reach underserved populations.

- Further develop organisational capacity and build network connectivity
- Implement strategies to support the establishment of local and national Montessori initiatives that are EsF based
- Facilitate the expansion of activity through the provision of resources such as assemblies, talks and online networking opportunities to increase understanding and engagement
- Continue to work, advise and partner with organisations involved in child advocacy that complement our mission
- Collect and analyse data to measure the impact of initiatives from within the EsF Community
- Continue to develop models that reach children, families and communities in under-resourced and under-represented populations

Goal 2 Build influence through advocacy and public policy outreach

To ensure greater access to Montessori education as a path to empowerment, sustainability and peace, AMI will build further connections with like-minded international organisations and continue to participate in and contribute to our partnership with UNESCO and the UN.

- Disseminate policy briefs on key current educational issues and enhance the participation of AMI Affiliates and AMI members' in key events, campaigns and policy debates
- Engage with stakeholders and collaborate with relevant organisations, such as UNESCO, to promote AMI's perspective and position on key policies globally and nationally
- Optimise AMI's engagement, voice and impact on key educational policies and Human Rights and in particular Children's Rights and the Sustainable Development Goals
- Represent Montessori positions in global education, sustainability and peace
- Build an effective movement through increasing membership, enhancing their participation in AMI, and engagement in key events, campaigns and policy debates
- Enable Montessori education to retain its authenticity and integrity while simultaneously going to scale and reaching further and wider into communities.

Goal 3 Extend resources for families and communities

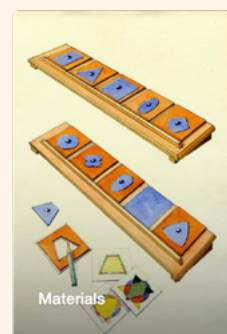
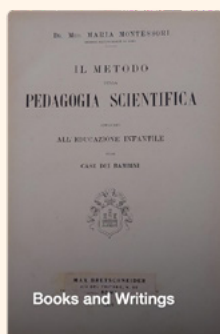
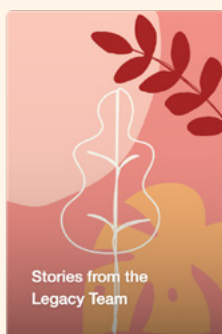
AMI offers sustainable, accessible and highly effective Montessori education to communities around the world.

- Extend the resources for parents and families including the Aid to Life online resources for children beyond 3 years of age and continue to offer information in more languages
- Establish, develop and expand AMI courses and programmes for those working or living in non-Montessori settings: first six weeks of life; sport talent development, healthy ageing, dementia and ageing, end of life, Community Rooted Education (CoRE) etc.
- Continue to partner with Indigenous and First Nation peoples as well as displaced communities to offer Montessori programmes
- Evolve strategies and guidance on multilingualism
- Engage young adults to become active in programmes and events that focus on social impact, earth stewardship and facilitate international collaboration with like-minded organisations

LEGACY

Montessori approach
for the full development
of the human being

Contemporary research continues to endorse Montessori's work, increasing the need to study and analyse original archival material and to promote further research and investigation into the effectiveness of the approach. As part of our stewardship AMI curates The Maria Montessori House, Maria Montessori's home in Amsterdam, to incorporate an archive and research centre, exhibition and lecture space to host cutting edge lectures and debates. It will showcase displays of original manuscripts and translated works as well as exhibitions of contemporary activities from around the world. The archives will also be preserved digitally and made available online. The research centre will be an active hub where researchers can draw upon the archives as well as current studies that shed light on the application of the Montessori approach as it is practised today.



Goal 1 Create an unparalleled Montessori knowledge hub, repository and archive

As the faithful custodian of Maria Montessori's legacy, vision and impact, AMI will create a Montessori Knowledge Hub (actual and virtual) enabling access to Montessori archives and publications.

- Collect and publish archival documents, materials and artefacts enabling access, actual and virtual, leading to increased scholarship and knowledge of Maria Montessori and Montessori education
- Catalogue, review, and preserve documents and materials for the archives
- Develop an archive library and resource centre, actual and online
- Create an online website of historical facts relating to Maria Montessori

Goal 2 Promote research and development for education, peace and sustainability

AMI will promote the continuous study of the stages of development of the human being, cultivating an environment of academic scholarship and research enabling an authentic understanding of both the Montessori legacy and its dynamic and scientific interaction with contemporary practice.

- Collaborate in the design of research projects to collect data from Montessori schools around the world as well as other Montessori outreach initiatives
- Promote and support the collection and analysis of data with regard to research into Montessori principles and practice in all schools and other settings where AMI trained personnel are working
- Cultivate and advance relationships with the scientific world and academic institutions to enable and encourage researchers to study and measure the Montessori approach and its impact
- Support and facilitate the dissemination and publication of research related to Montessori
- Establish a global hub for exchange of resources and networking opportunities for researchers

Goal 3 Articulate the Montessori approach and advance Montessori principles and practice

AMI incorporates its long history and experience of implementation with new research on best practices and disseminates knowledge and information through multiple agencies and modalities, including a global network of members, teachers, teacher trainers, training centres, affiliated societies and other networks.

- Create spaces (virtual and physical) to enable greater access and insight into Maria Montessori, the Montessori approach and the global Montessori Movement
- Provide and evaluate resources that increase knowledge and further define, document, guide and demonstrate Montessori principles and practices
- Support the publication and translation of Montessori books and resources
- Ensure Montessori principles and practices are made more widely known while safeguarding the authenticity of the approach

Strategic Communication

To support the strategic plan and achieve our nine ambitious goals a comprehensive strategic communication plan will be implemented, shared with and supported by our network.

This plan will ensure that we:

- communicate our overall organisational objectives effectively
- are recognised as uniquely authoritative
- articulate and differentiate AMI's quality programmes
- engage with stakeholders to build collaboration and trust
- evaluate and demonstrate the success of our work
- highlight the relevance and responsiveness to local and global needs
- ensure people understand what AMI does
- create further transparency with regard to our goals and expectations
- provide tools, resources and support to our Affiliate and wider network in implementing this strategy

Social media channels



Instagram



Facebook



Twitter



Apple Podcasts



LinkedIn



Spotify



Youtube






Google Podcasts

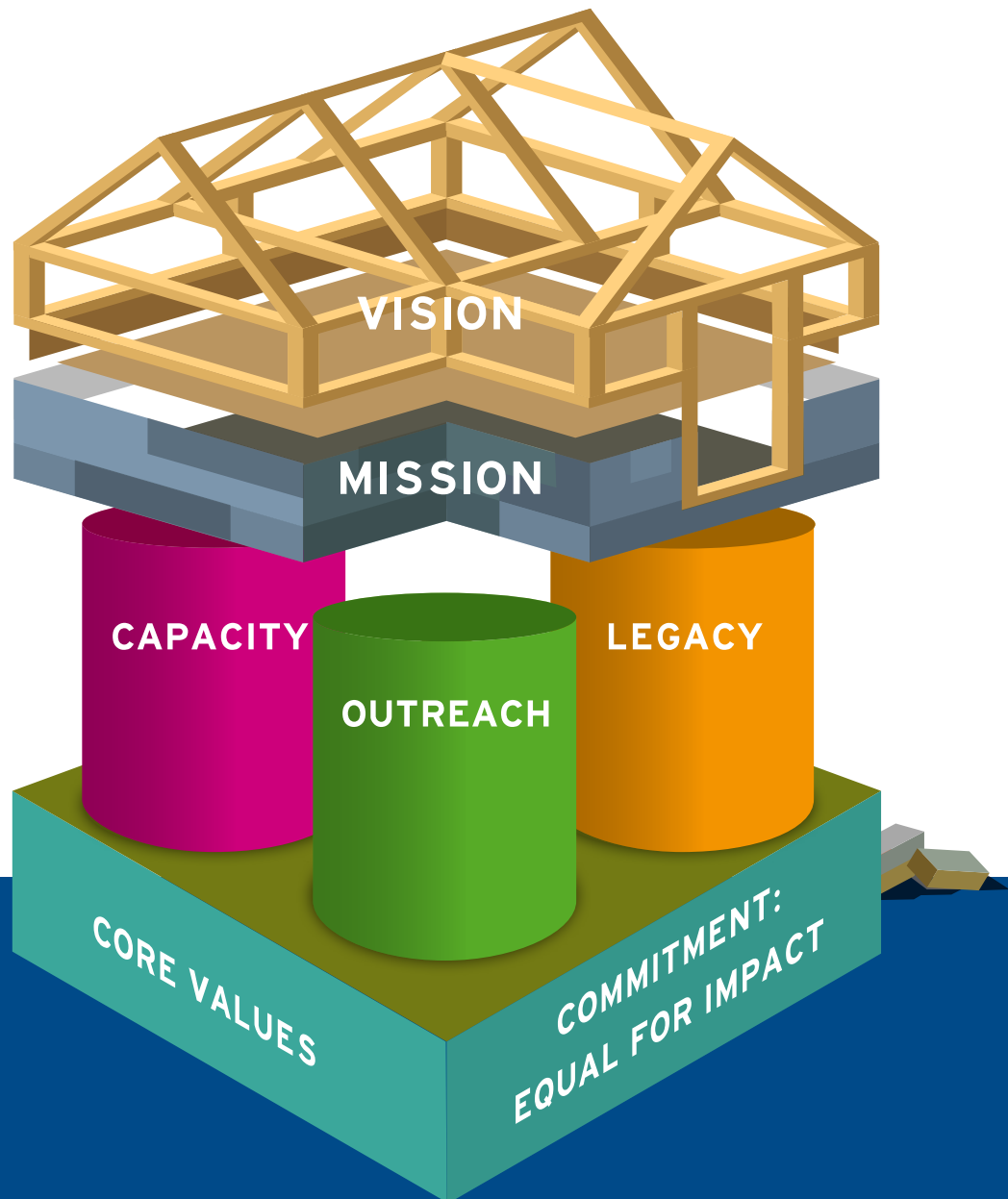


Soundcloud

Key websites

	Name	Website
	Association Montessori Internationale AMI Digital	https://montessori-ami.org https://montessoridigital.org
	Educateurs sans Frontières Montessori for Dementia and Ageing	https://montessori-esf.org https://montessoridementia.org
	Aid to Life Montessori Architecture	https://aidtolife.org https://montessoriarchitecture.org
The Maria Montessori Archives, Montessori Knowledge Hub and Repository		https://archives.montessori-ami.org/ (to be launched)

VISION, MISSION AND VALUES



Association Montessori Internationale

Koninginneweg 161
1075 CN Amsterdam
The Netherlands
+ 31 20 6798932
info@montessori-ami.org